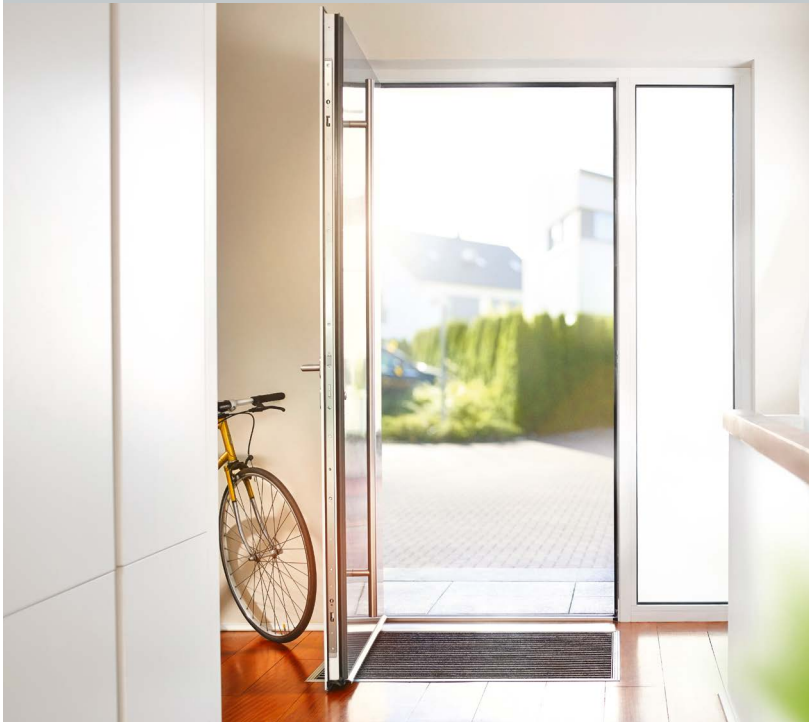


PVC door with BS 3700, daytime release, A-opener, IO module smart and access control system



Automatic multi-point locking system BS 3700

- Automatic multi-point locking system with self-adjustment, no subsequent readjustment necessary on site
- Retaining elements fix the door sash securely in the frame parts at all times
- Free engagement at all times of all locking elements (2 x hook bolts and main lock bolt) with bolt back-pressure protection
- Automatic 20 mm projection of the hook bolt and main lock bolt with a backset of as little as 35 mm
- Child-proof lock activated by disabling the door handle using the cylinder lock

Production benefits

- DIN orientation can be adjusted using the main lock latch only
- Automatic trigger latch with self-adjustment of the DIN orientation
- Existing KfV AS 2xxx, BS 2xxx or AS 3xxx can be replaced with minimal effort
- Easy to retrofit the daytime release: when uninstalled by fixing with a screw at the side

Freely configurable options:

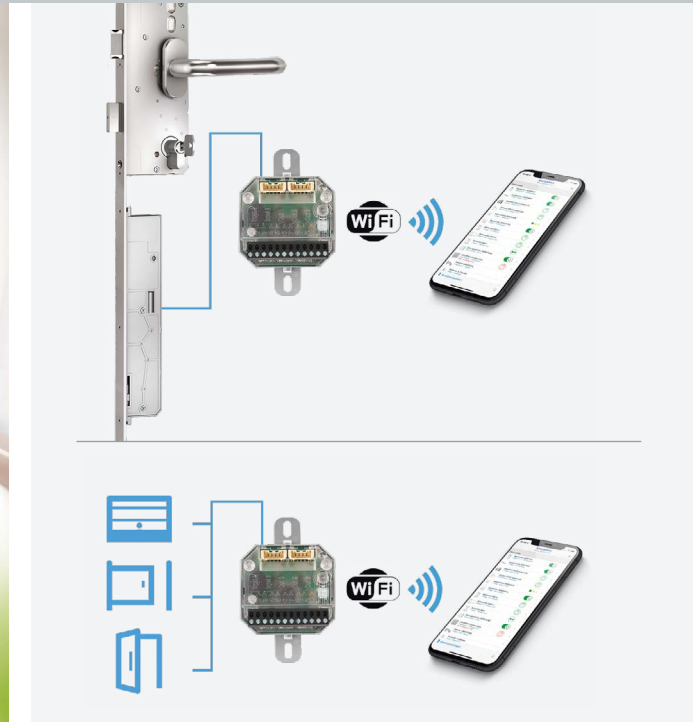
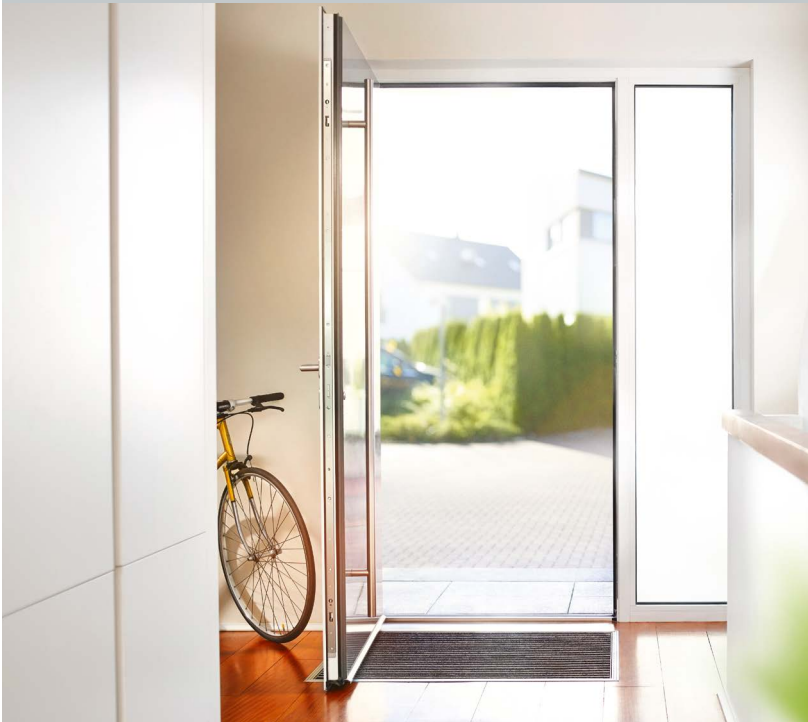
- Daytime release TA suitable for retrofitting
- Safety lock T3 with handle operation inside
- Safety lock T4 with handle operation inside and via the cylinder lock inside/outside
- Extension pieces for doors up to 3 m in height
- A-opener for electromechanical opening of the door
- Control possible via SIEGENIA access control systems: fingerprint scanner, keypad and transponder
- IO module smart for connection to existing third-party systems



Environmental performance analysis*

* LCA available, please contact us at nachhaltigkeit@siegenia.com.

PVC door with BS 3700, daytime release, A-opener, IO module smart and access control system



IO module smart

- Optimum interface for connecting external products and applications with SIEGENIA devices and the SIEGENIA Comfort app
- Control and monitor GENIUS electromechanical multi-point locks and A-opener motor, as well as the DRIVE axxent DK and DRIVE CL tilt-locking drives using the SIEGENIA Comfort app
- Operate third-party drives – such as garage door, roller shutter and motorised door drives – from the SIEGENIA Comfort app
- Intelligent status display
- Matter smart home standard in the pipeline

Production benefits

- SI BUS interface for digital, encrypted communication
- Two potential-free inputs
- Three potential-free outputs
- Compact design for on-wall or in-wall mounting
- Installation in standard cavity wall boxes and flush-mounted boxes



More information:

[IO module smart product page](#)



Environmental
performance analysis*

* LCA available, please contact us at nachhaltigkeit@siegenia.com.